

ROBBINS ADDITION

Specifications for ownership of lots in the Robbins Addition of North Loup, Nebraska include but are not limited to the following. The Village of North Loup is offering 4 lots to be given to individuals who meet the criteria set forth by the Village Board.

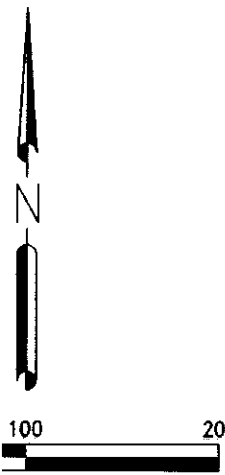
Free residential building lots for those willing to build a new house within 24 months.

- 1) Those receiving lots must live in the home for a minimum of five years or pay a fee of \$2500.00.
- 2) Homes must be of new construction.
- 3) Must have a minimum of 1000 square feet of living space.
- 4) Not carry a personal property title (like a mobile home)
- 5) Sit on a poured concrete foundation formed as a crawl space or basement.
- 6) Must be hooked up to Village utilities.
- 7) Lot sizes average 118' x 106'

Any cost associated with preparing the lot for building will be borne by the recipient of the lot.

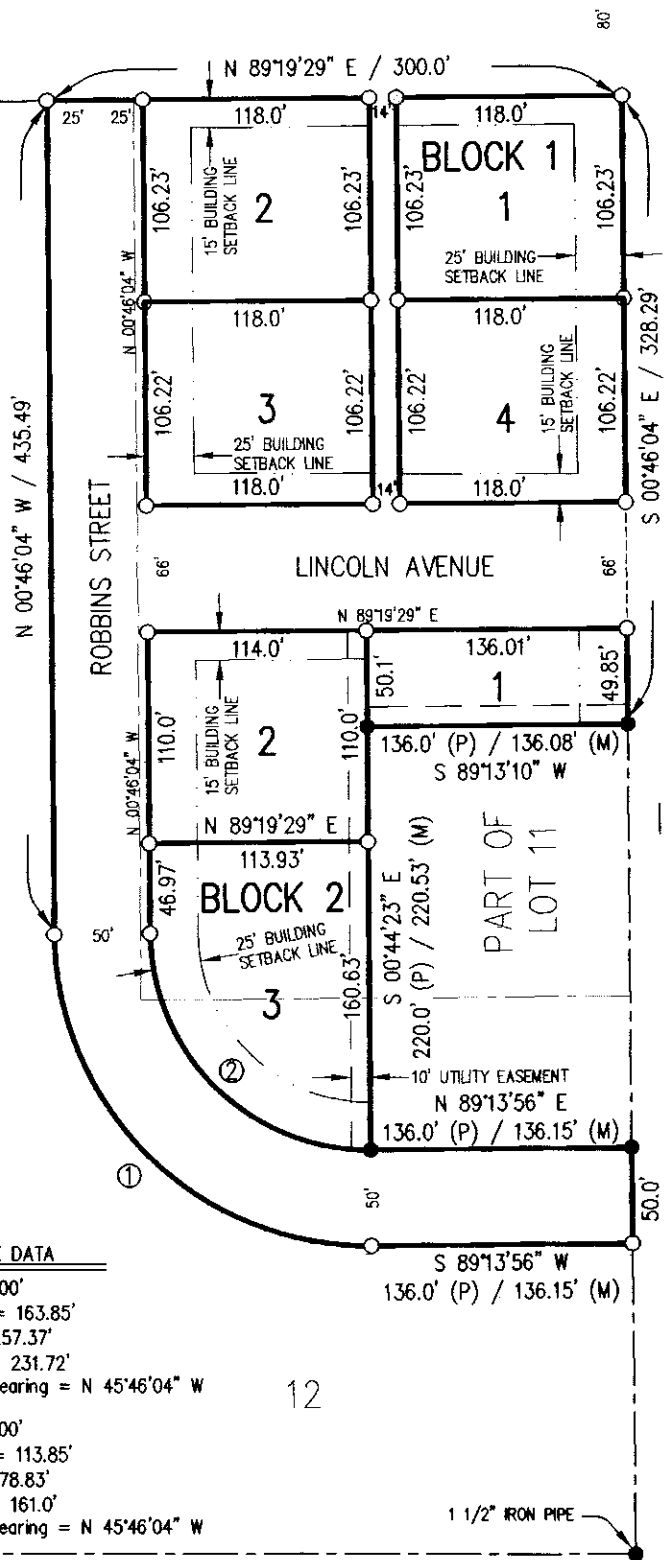
A complete application for a free lot must include a pre-approved letter from your lender (if applicable).

September 18, 2006
Revised December 4, 2006



ALL DIMENSIONS IN FEET
 FOUND (CAPPED 5/8" REBAR,
 INDICATED)
 ESTABLISHED (CAPPED 5/8" REBAR)
 POINT
 DISTANCES
 DISTANCES

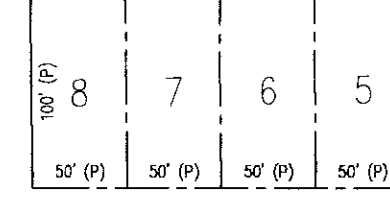
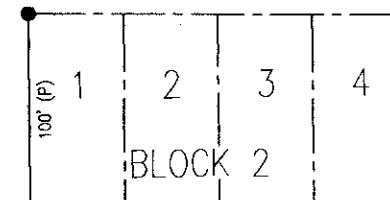
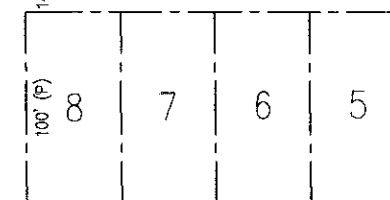
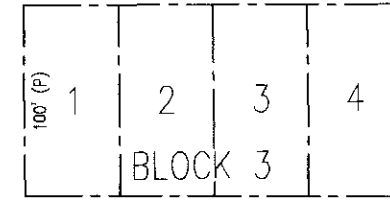
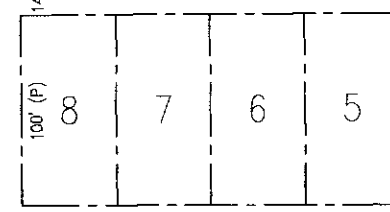
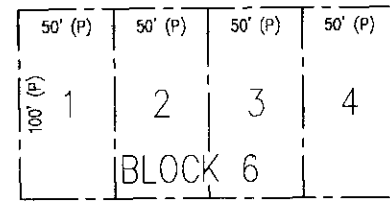
SUBURBAN ADD.



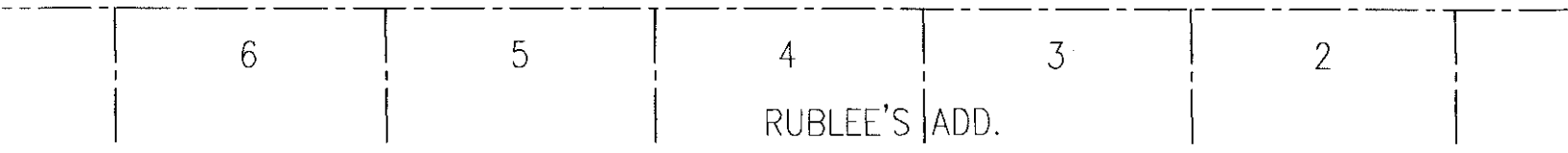
CURVE DATA

① $\Delta = 90^{\circ}00'$
 Radius = 163.85'
 Arc = 257.37'
 Chord = 231.72'
 Chord Bearing = N 45°46'04" W

② $\Delta = 90^{\circ}00'$
 Radius = 113.85'
 Arc = 178.83'
 Chord = 161.0'
 Chord Bearing = N 45°46'04" W



FIRST STREET / HIGHWAY No. 11



RUBLEE'S ADD.

SURVEYOR'S CERTIFICATE

I, Ronald G. Ridgway, Nebraska Registered Land Surveyor No. 568, do hereby certify that the su